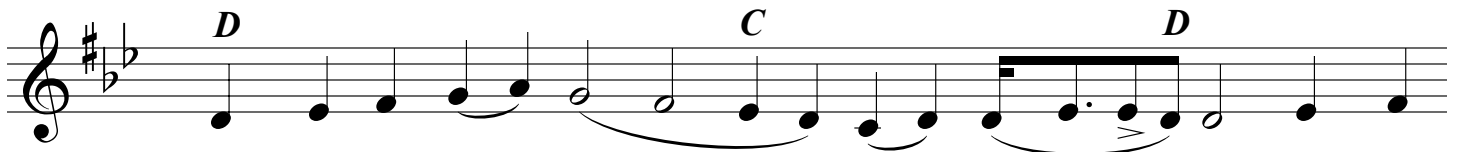
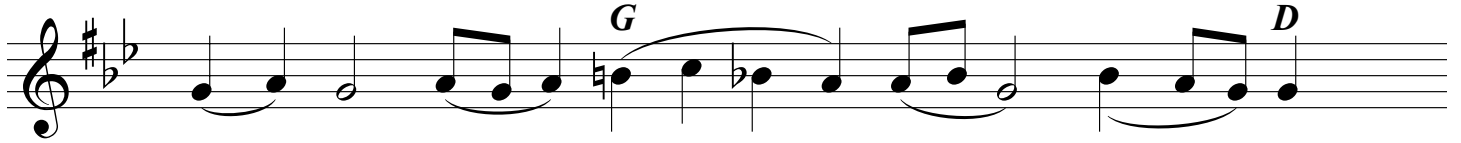


# megalyrnarion for holy and great saturday

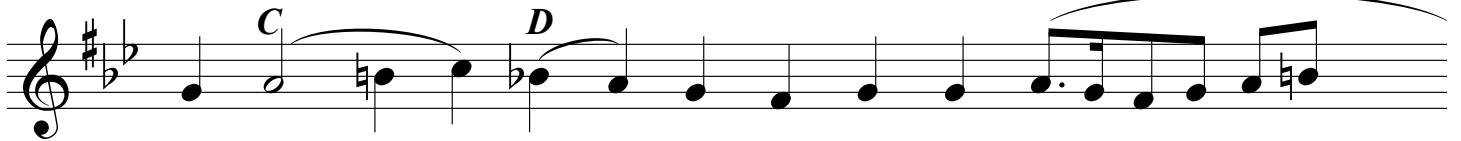
*Plagal of Second Tone*



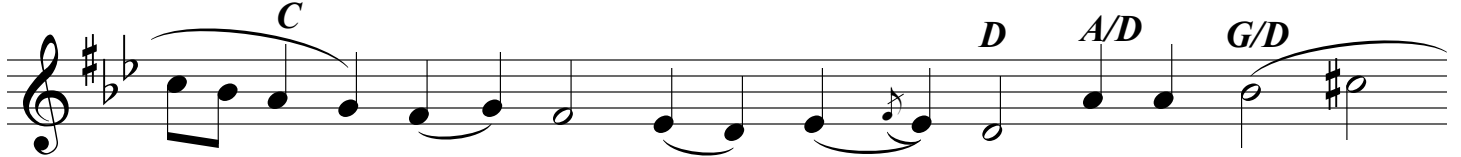
Mourn not for Me, O my Moth - er, though be -



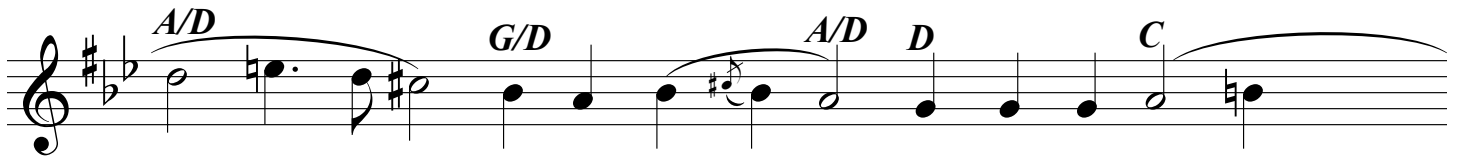
hold - ing Me bur - ied, Whom as



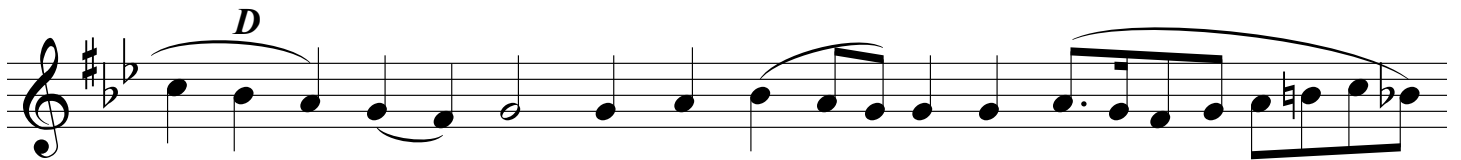
thy Son thou didst con - ceive with - out



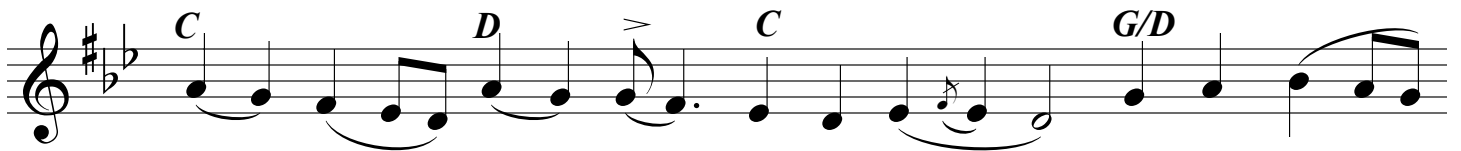
seed in thy womb; for be - hold,



I shall rise and shall be glo -



ri - fied, and with glo - ry un - end -



ing, as God I shall ex - alt all them that

The image shows a musical score for a song. It consists of two staves of music in a treble clef, with a key signature of one sharp (F#) and a time signature of 3/4. The lyrics are written below the notes. The first staff contains the lyrics "mag - ni - fy thee with faith and". The second staff contains the lyrics "fer - vent love.". The music features various note values, including quarter notes, eighth notes, and a dotted quarter note. There are also rests and slurs. Chord symbols are placed above the notes: "C" above the first measure of the second staff, "D" above the second measure, and "G↓/D" above the third measure. The piece ends with a double bar line.

mag - ni - fy                      thee            with            faith            and

fer -                      vent                      love.

*C*                      *D*                      *G↓/D*